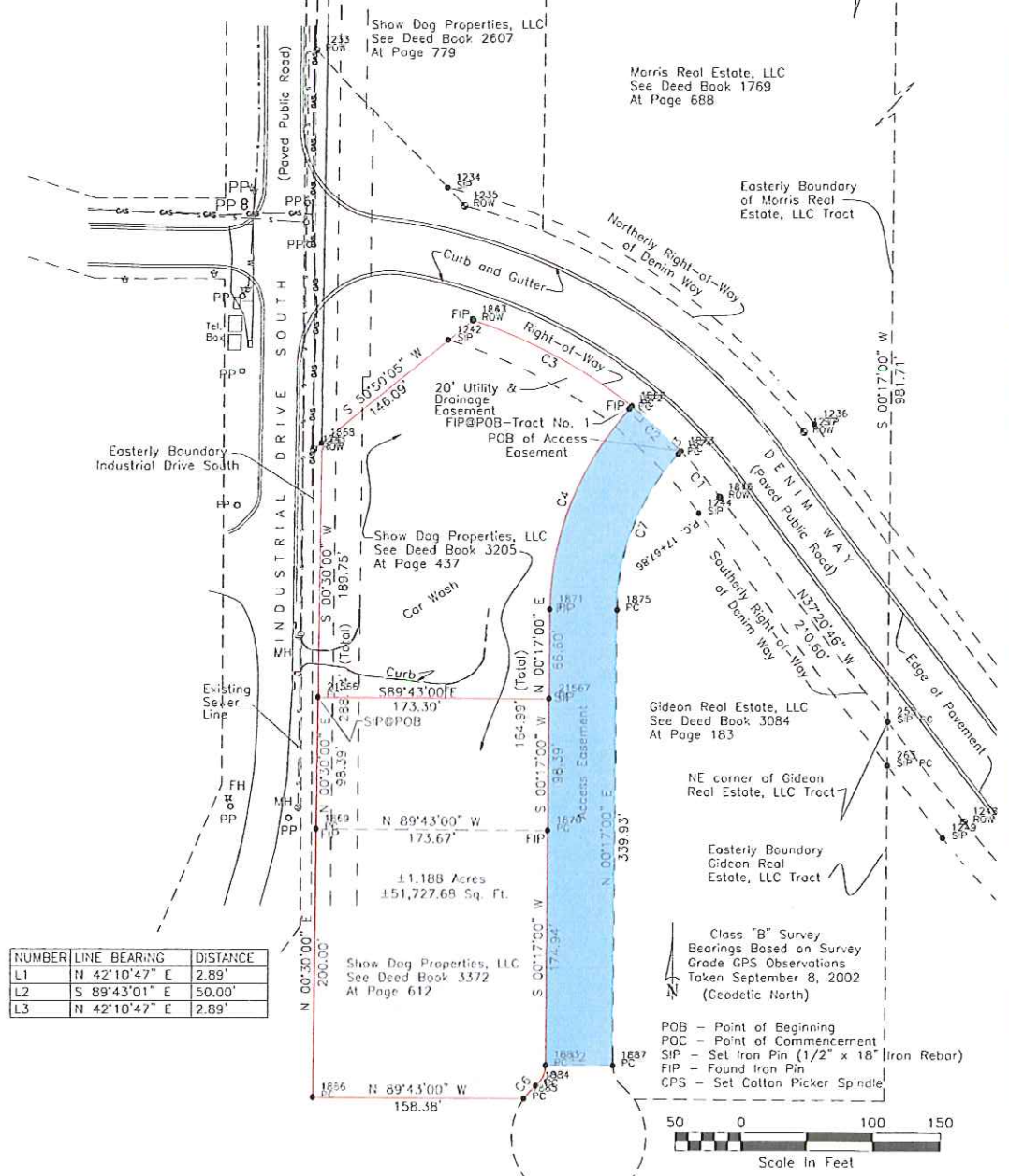


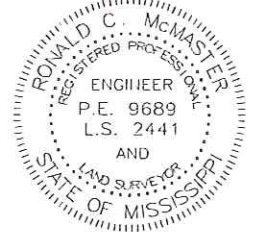
NO.	CHORD DIRECTION	RADIUS	ARC LENGTH	CHD. LENGTH
C1	N 40°43'18" W	385.00	45.36	45.34
C2	N 47°49'12" W	385.00	50.04	50.00
C3	N 61°38'57" W	385.00	135.81	135.11
C4	N 21°13'54" E	225.00	164.53	160.89
C5	S 25°16'51" W	20.00	17.45	16.90
C6	S 42°41'45" W	50.00	13.23	13.20
C7	N 21°13'54" E	175.00	127.97	125.13



NUMBER	LINE BEARING	DISTANCE
L1	N 42°10'47" E	2.89'
L2	S 89°43'01" E	50.00'
L3	N 42°10'47" E	2.89'

Note:
Random Traverse Closure Precision For This Survey Meets or Exceeds the Minimum Standards For a Class "B" Survey.

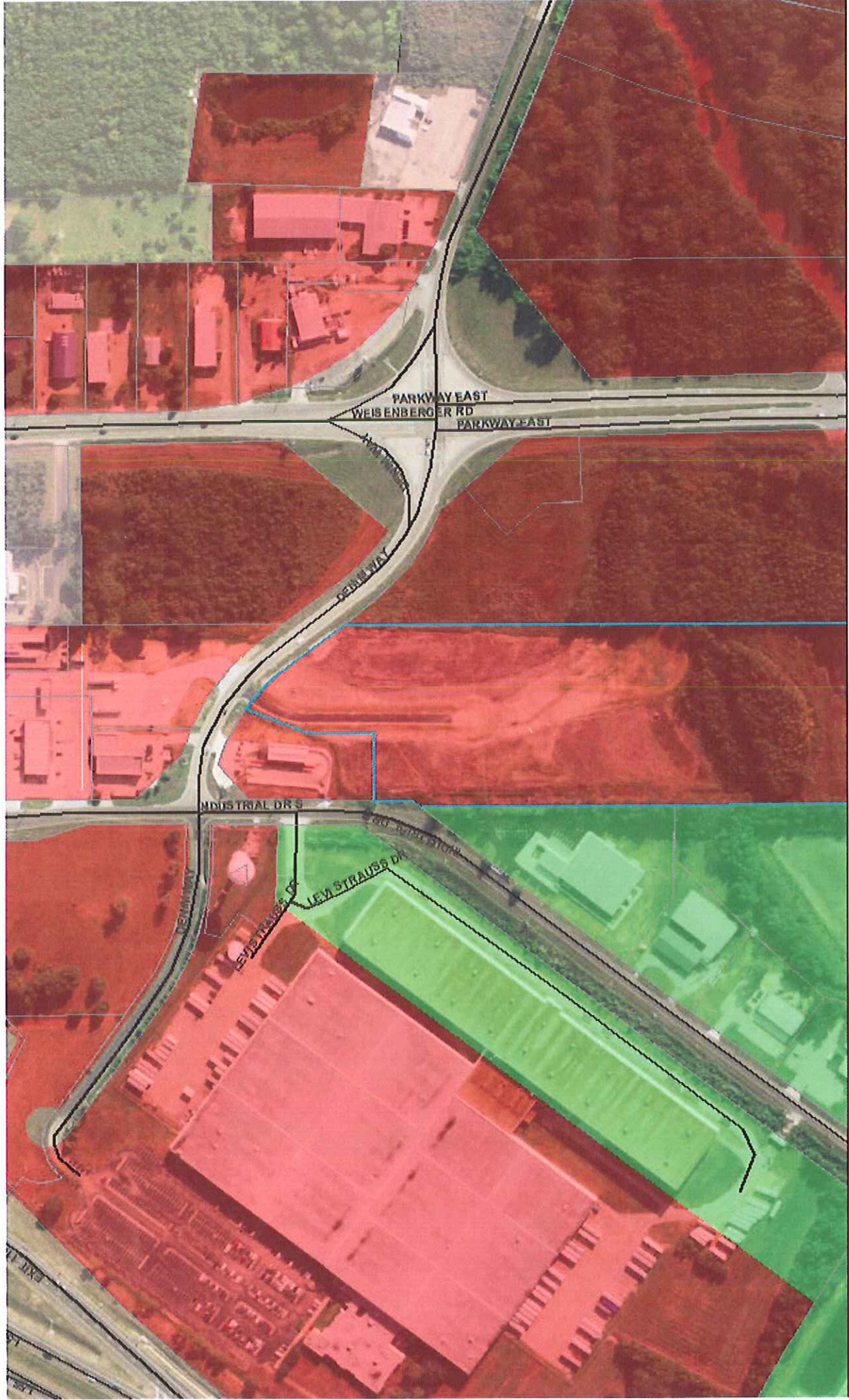
I CERTIFY THAT THE INFORMATION SHOWN ON THIS PLAT IS THOROUGH AND ACCURATE TO THE BEST OF MY KNOWLEDGE.



PLAT OF SURVEY OF CERTAIN PROPERTY IN THE WEST 1/2 OF THE NE 1/4 OF SECTION 28, T8N-R2E, MADISON COUNTY, MISSISSIPPI

McMASTER & ASSOCIATES, INC.
CIVIL ENGINEERS AND LAND SURVEYORS
212 Waterford Square, Suite 300
Madison, MS 39110
Phone: 601-605-1090
Fax: 601-605-1091
Email: ronnie@mcmastereng.com

DATE: 8-21-2017 SCALE: 1" = 100' JOB NO: M-1766-4



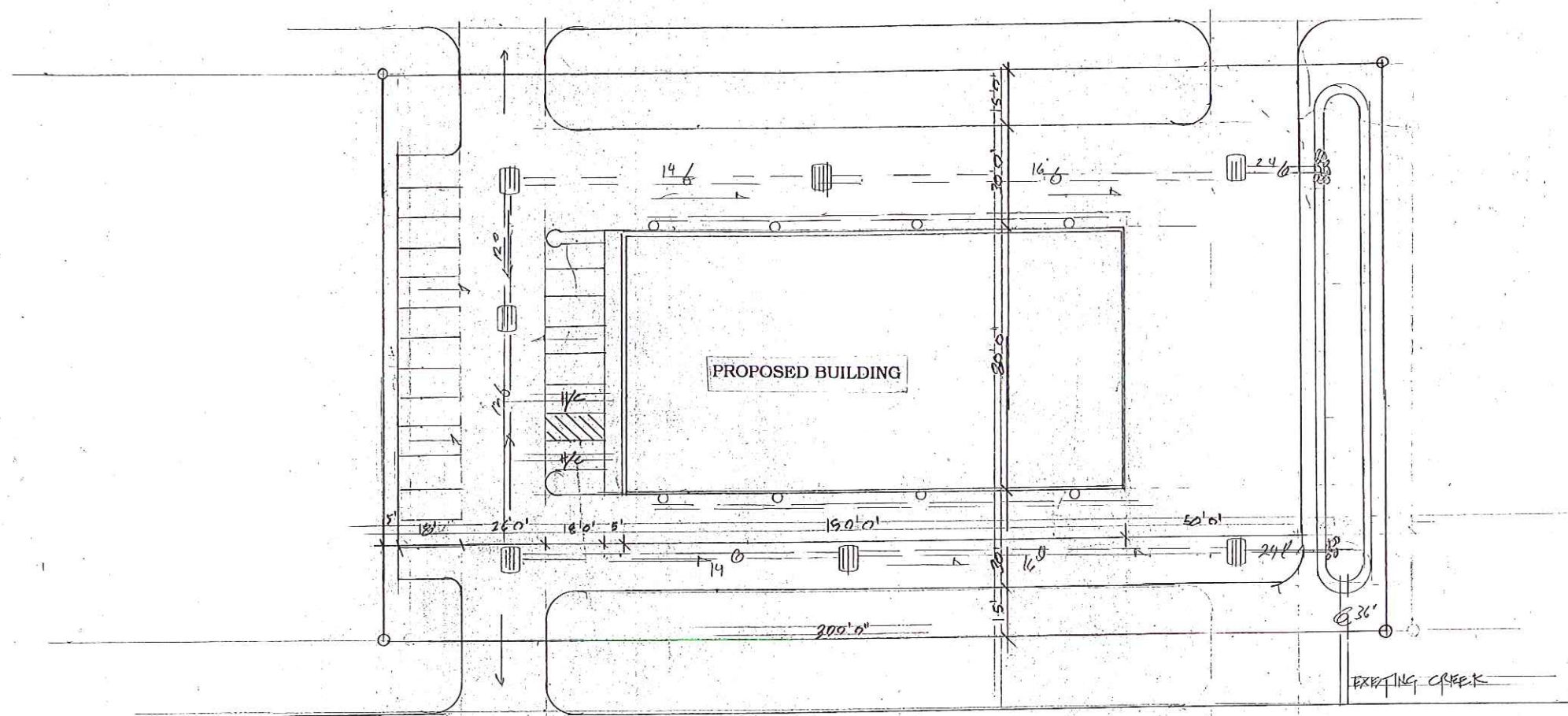
Madison County Web Map

Parcels Zoning
I-2
C-1
C-2
Public

Roads
—

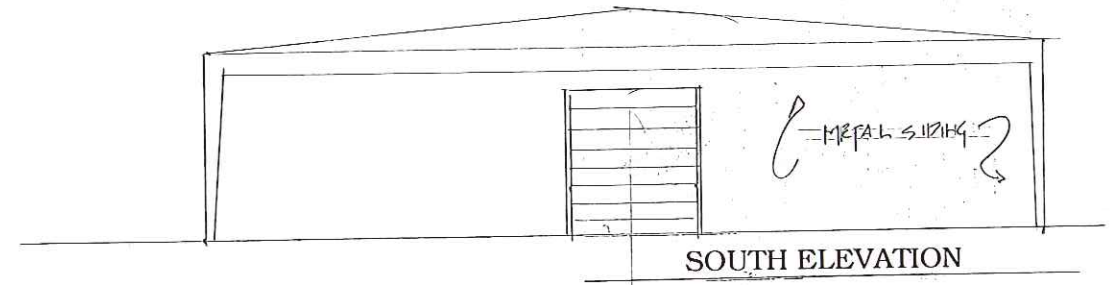
Madison
County
GIS

0 0.0275 0.055 0.11 0.22 0.44
1:4,514
Madison County



SCHEMATIC SITE PLAN

SCALE: 1" = 20' 0" WITH PRELIMINARY DRAINAGE

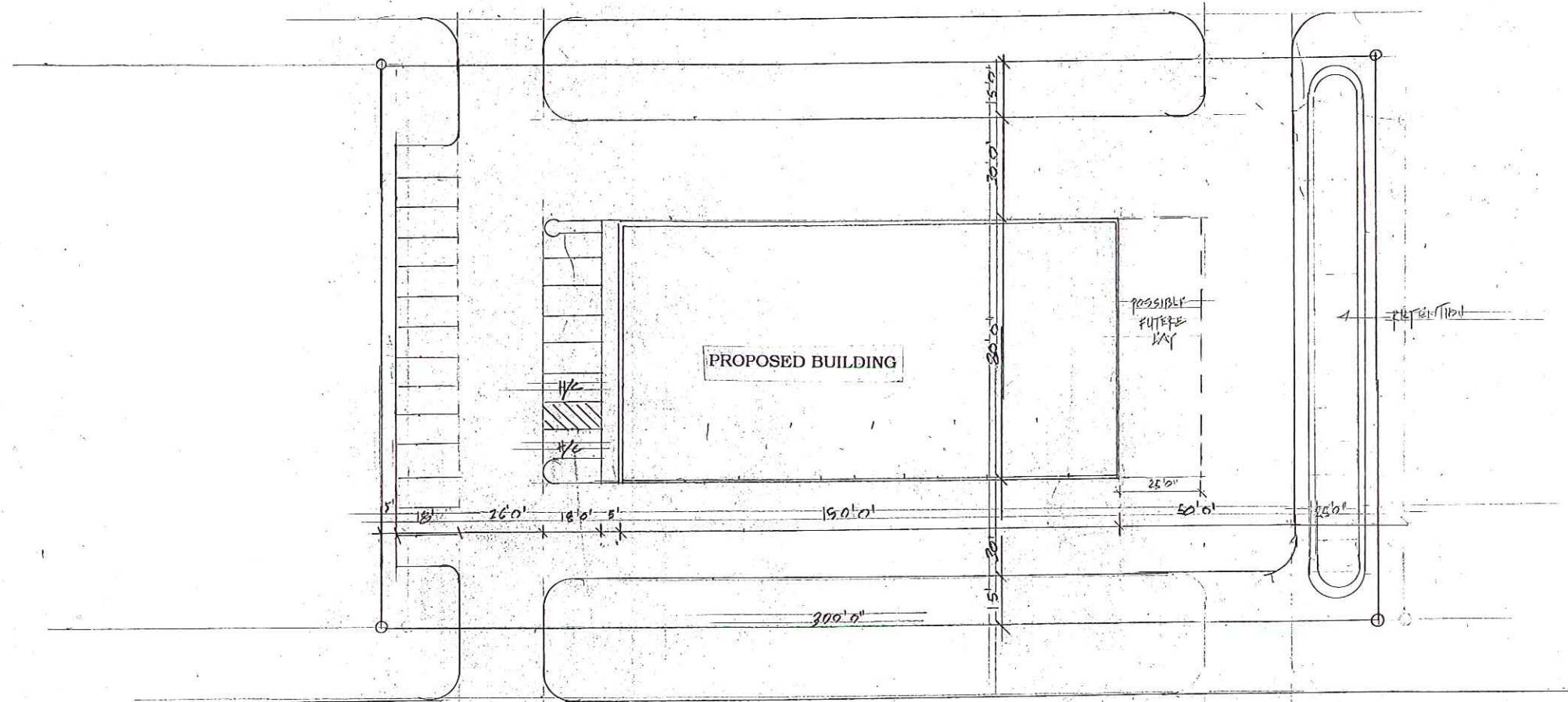


SOUTH ELEVATION

REVISIONS	BY

PARKWAY TRUCK CENTER
GREG AINSWORTH, ARCHITECT

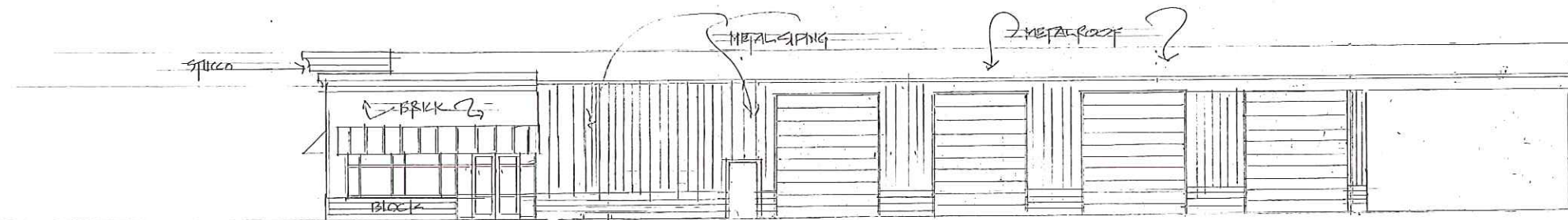
DRAWN
CHECKED
DATE
SCALE
JOB NO.
SHEET
OF SHEETS



SOUTH INDUSTRIAL DRIVE

SCHEMATIC SITE PLAN

SCALE: 1" = 20'0"



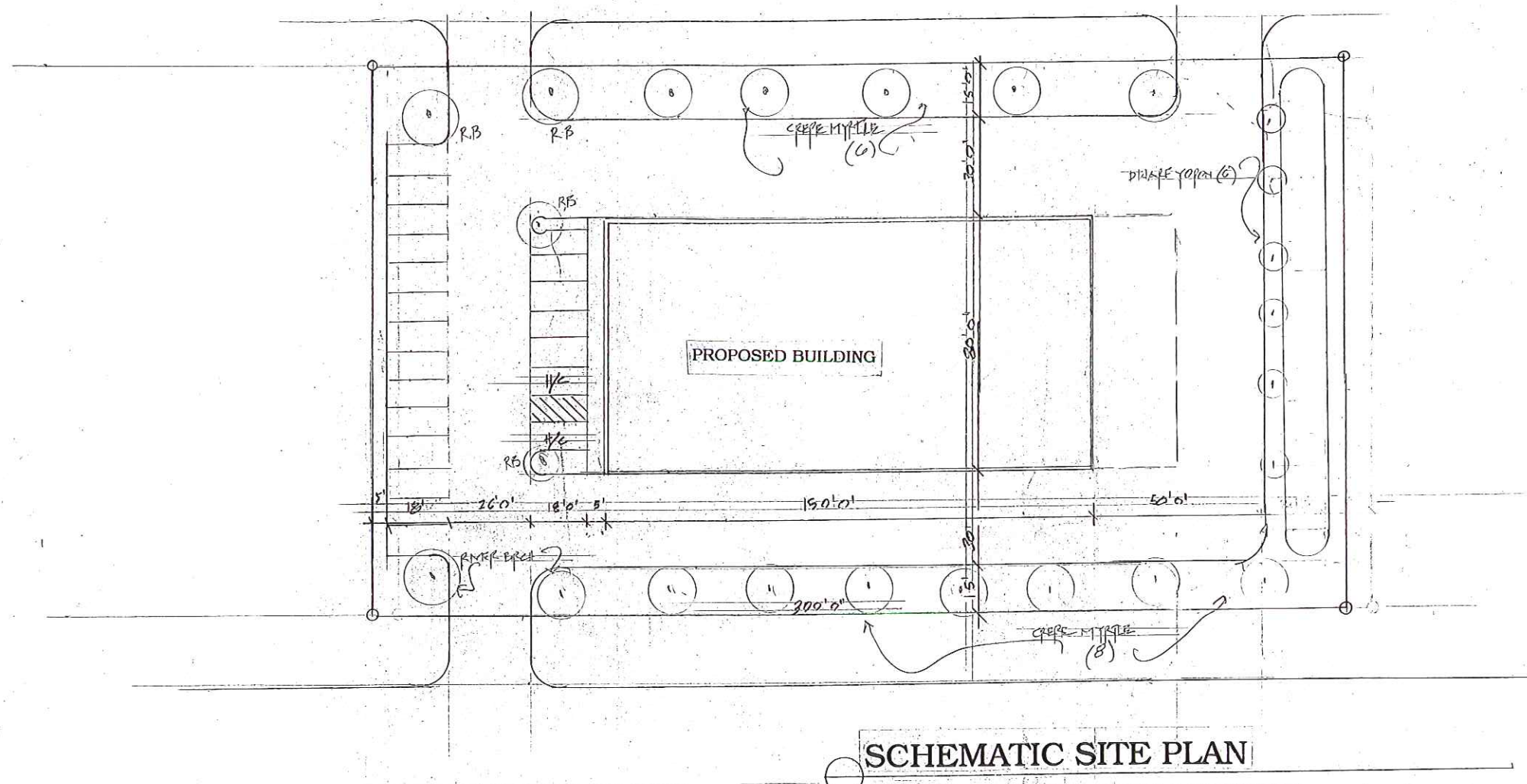
WEST ELEVATION

REVISIONS	BY

PARKWAY TRUCK CENTER

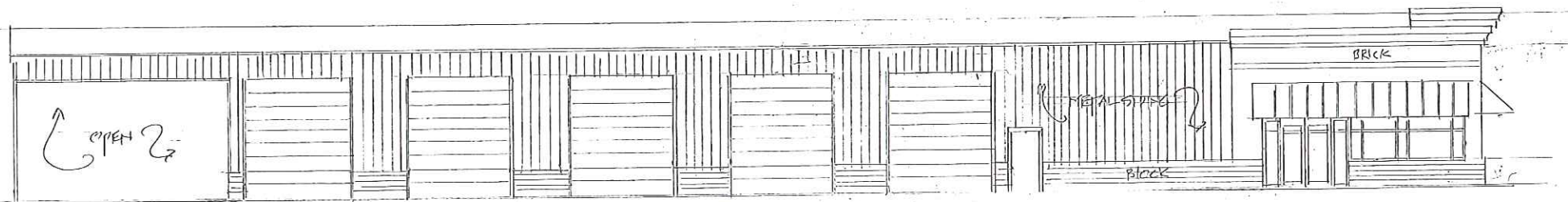
GREG AINSWORTH, ARCHITECT

	DRAWN
	CHECKED
	DATE
	SCALE
	JOB NO.
	SHEET
	OF SHEETS



SCHEMATIC SITE PLAN

SCALE: 1' = 20'0" WITH LANDSCAPE



EAST ELEVATION

REVISIONS	BY

PARKWAY TRUCK CENTER
GREG AINSWORTH, ARCHITECT

DRAWN
CHECKED
DATE
SCALE
JOB NO.
SHEET
OF SHEETS